

## Your Post-Acute Provider

### Supplies Don't Set Us Apart, Our Team Does

All Med Medical Supply was established in 1995 as a full-line medical distributor and billing company committed to serving post-acute providers throughout the Midwest. All Med's strength is the ability to guarantee our customers the right products, at the right price and at the right time.

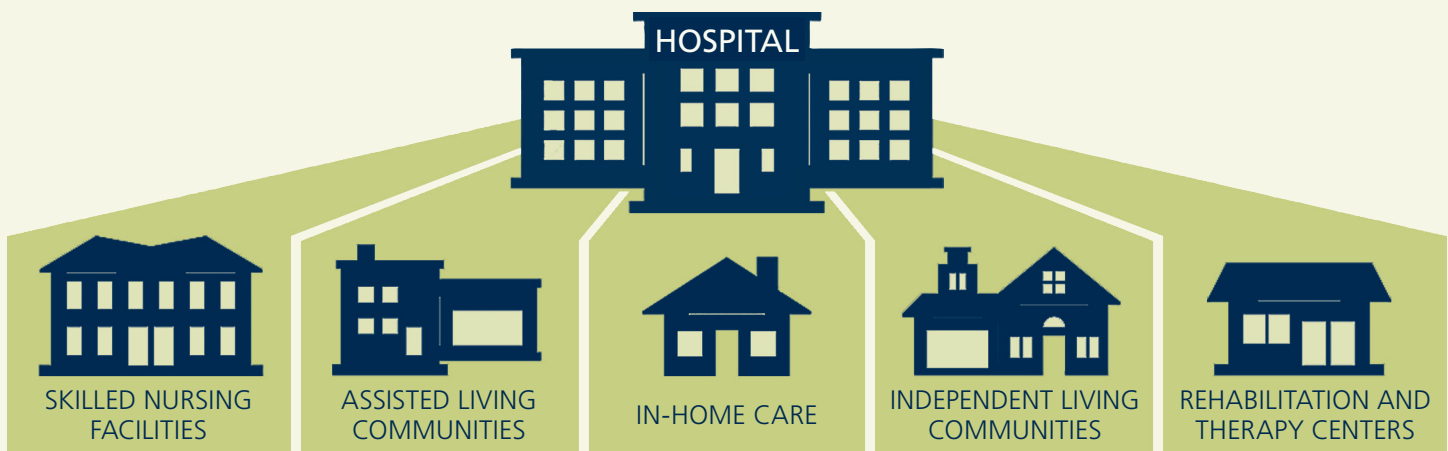
Our passion is helping our customers succeed in their ever-changing and challenging regulated environment. The All Med staff brings extensive product knowledge, assistance with inventory efficiencies, and the ability to stay on top of industry trends that effect the healthcare environment.



### Our Commitment

- Dedicated inside and local Account Managers who consistently receive five star ratings on every customer survey
- Proven contracting analysis to save our customers thousands of dollars by connecting your product formulary to the right contracts
- 24/7/365 Emergency Service
- Conveniently located distribution centers offering easy access for customer pick-up
- Thousands of commonly-used products available in one of our multiple warehouses
- Consistent fill rates of 98% and higher on stock items
- Exceptional discounts on non-routine purchases
- Leasing for capital purchases, many with no finance charges
- 1% online discount at time of order
- Logistics to meet your unique delivery requirements
- New technology offerings and comprehensive education programs
- Data analytics and supply chain expertise
- Legal and regulatory updates

All Med is prepared to assist with medical supply management throughout all transitions of post-acute care.



Same Day & Next Day Delivery Available • 24 Hour / 7 Day a Week Emergency Service  
Dedicated Inside Account Representatives • 8 am to 5 pm EST